



kula mula

Spring & Summer
{2010}



{on cover}

Rita Chiffon Dress

Style # SS10-01

Ship: Feb 2010

Soft creamy white dress in organza with ruffles around neck & built in slip.

{12-18m, 18-24m, 2T, 3T, 4, 5, 6, 7, 8}



Elizabeth Sundress



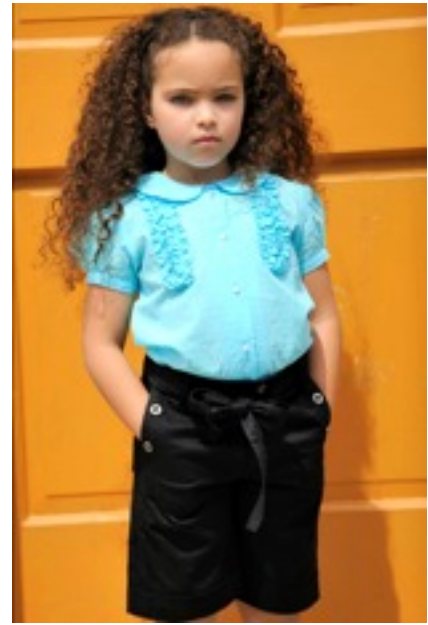
Colors: Yellow, Aqua

Style # SS10-03

Ship: Feb 2010

Cotton dotted swiss fabric, straps cross in back. Black and cream striped knit around waist band.

{12-18m, 18-24m, 2T, 3T, 4, 5, 6, 7, 8}



Elizabeth blouse



Colors: Yellow, Aqua

Style # SS10-05

Ship: Feb 2010

Cotton dotted swiss fabric, tiny pearl buttons. Cap sleeves with puckers.

{12-18m, 18-24m, 2T, 3T, 4, 5, 6, 7, 8}

Hedy Headband



Style # SS10-06

Ship: Feb 2010

Cotton/poly headband black & cream polka dots.
one size

Majna walking shorts

Style # SS10-04

Ship: Feb 2010

Black cotton twill shorts, long length, tie in front.

{12-18m, 18-24m, 2T, 3T, 4, 5, 6, 7, 8}



Bridgitte tunic dress

Style # SS10-02

Ship: Feb 2010

Soft sheer polka dot fabric. Tunic style, ties in front, includes satin slip.

{12-18m, 18-24m, 2T, 3T, 4, 5, 6, 7, 8}



Elizabeth infant sun suit

Style# SS10-07

Ship: Feb 2010

Colors: Aqua, yellow

Infant sun romper in beautiful dotted swiss cotton fabric, ruffles around the back. Black buttons.

Pre-pack 1 {0-3, 3-6, 6-9, 9-12m}

Pre-pack 2 {12m, 18m, 24m}





Hedy Cherries Tank

Style # SS10-013

Ship: Feb 2010

Cotton knit tank in black with cherries applique in black & cream dots.

{12-18m, 18-24m, 2T, 3T, 4, 5, 6, 7, 8}



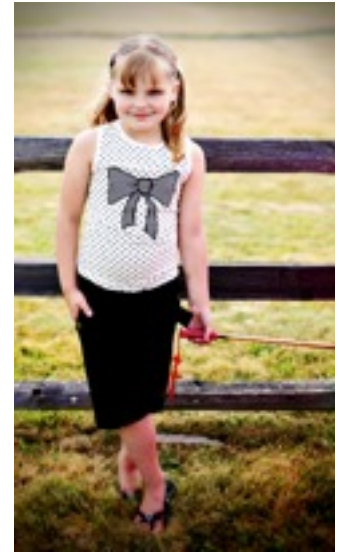
Ava Shift Dress

Style # SS10-09

Ship: Feb 2010

Bold cotton fabric in blk & cream. Pockets will be polka dots as shown below.

{12-18m, 18-24m, 2T, 3T, 4, 5, 6, 7, 8}



Fay Bow Tank

Style # SS10-08

Ship: Feb 2010

Soft cotton & rayon polka dot tank w/ striped bow applique on front.

{12-18m, 18-24m, 2T, 3T, 4, 5, 6, 7, 8}

Hedy Sailor Shorts

Style # SS10-014

Ship: Feb 2010

Cotton/poly shorts in blk & cream dots, sailor style with black buttons, blk piping down leg.

{12-18m, 18-24m, 2T, 3T, 4, 5, 6, 7, 8}



Gene Headband

Style # SS10-010

Ship: Feb 2010

Simple black satin headband w/ bow on side.

one size



Myrna walking shorts

Style # SS10-04

Ship: Feb 2010

Black cotton twill shorts, long length, tie in front.

{12-18m, 18-24m, 2T, 3T, 4, 5, 6, 7, 8}





Hedy Starlight Dress

Style # SS10-011

Ship: Feb 2010

Silvery black poly/cotton dress. The fabric sparkles in the light and is a stunning dark grey/black color. Polka dot sash around waist band. (Simple bloomer include for sizes up to 2T)



{12-18m, 18-24m, 2T, 3T, 4, 5, 6, 7, 8}

Ava Infant Sun Romper

Style# SS10-07

Ship: Feb 2010

Infant sun romper. Main body in bold blk & cream floral print. Ruffles around side & back. Snaps for easy diaper changes.

Pre-pack 1 {0-3, 3-6, 6-9, 9-12m}

Pre-pack 2 {12m, 18m, 24m}



Hedy Dotted Dress

Style # SS10-012

Ship: Feb 2010

Cotton/poly woven blk & cream polka dotted dress, skinny straps, full skirt and tie around waist.

{12-18m, 18-24m, 2T, 3T, 4, 5, 6, 7, 8}



Hedy Headband

Style # SS10-06

Ship: Feb 2010

Cotton/poly headband black & cream polka dots. one size





Audry Dress

Style # SS10-205

Ship: Feb 2010

Navy blue, poly cotton blend crisp cotton dress. Drop waist with full skirt. Cream colored accent details.

Sizes {2T, 3T, 4, 5, 6, 7, 8}

Claudette Crinoline skirt

Style # SS10-212b

Ship: Feb 2010

Three layers of soft nylon netting for fullness under skirt, color is white.

Small (2-6yrs), Large (6+ up)



Lillian infant 2pc sundress

Style# SS10-209

Ship: Feb 2010

Woven cotton fabric in hot pink, w/cream polka dots. Bloomers have layered ruffles in coordinating fabric.

Pre-pack 1 {0-3, 3-6, 6-9, 9-12m}

Pre-pack 2 {12m, 18m, 24m}



Lillian Ruffled Dress

Style # SS10-207

Ship: Feb 2010

Woven Cotton dress in hot pink, w/cream polka dots. Layers of ruffles. Skinny shoulder straps.

{12-18m, 18-24m, 2T, 3T, 4, 5, 6, 7, 8}



Alice Ruffled Top



Style # SS10-105

Ship: Feb 2010

Colors: White or Navy
Cotton knit tee with ruffles down the front, gathered cap sleeves.

{12-18m, 18-24m, 2T, 3T, 4, 5, 6, 7, 8}

Clara Tuxedo Blouse

Style # SS10-202

Ship: Feb 2010

Woven poly/cotton ruffled top. Cream colored fabric w/ navy blue polka dots. Pearl buttons up the front. Cap sleeves and ruffles down front.

{12-18m, 18-24m, 2T, 3T, 4, 5, 6, 7, 8}

Lana high-waisted pants

Style # SS10-201

Ship: Feb 2010

Woven cotton fabric, light weight, navy with white polka dots. Elastic in the back, zipper up side.

{12-18m, 18-24m, 2T, 3T, 4, 5, 6, 7, 8}



Lana 2pc infant Sun Dress

Style# SS10-200

Ship: Feb 2010

Woven cotton dress, navy blue w/ white polka dots, set includes ruffled bloomers.

Pre-pack 1 {0-3, 3-6, 6-9, 9-12m}

Pre-pack 2 {12m, 18m, 24m}



Clara infant Smocked Set

Style# SS10-203

Ship: Feb 2010

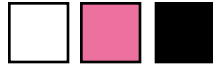
Woven cotton/poly smocked top with coordinating bloomers, top ties around neck. Bonnet included in set.

Pre-pack 1 {0-3, 3-6, 6-9, 9-12m}

Pre-pack 2 {12m, 18m, 24m}



Linen headband



Style # SS10-208

Ship: Feb 2010

Colors: hot pink, black, white

Linen flower attached to stretch headband.
one size



Lillian Smocked Set

Style# SS10-210

Ship: Feb 2010

Woven cotton fabric in hot pink, w/ cream polka dots. Top is smocked. includes matching bloomers.

Pre-pack 1 {0-3, 3-6, 6-9, 9-12m}

Pre-pack 2 {12m, 18m, 24m}



Alice Ruffled Top

Style # SS10-105

Ship: Feb 2010

Colors: White or Navy
Cotton knit tee with ruffles down the front, gathered cap sleeves.

{12-18m, 18-24m, 2T, 3T, 4, 5, 6, 7, 8}



Clara Twirl Skirt

Style # SS10-212b

Ship: Feb 2010

Woven cotton fabric in off white, with navy blue polka dots. Lined skirt.

{12-18m, 18-24m, 2T, 3T, 4, 5, 6, 7, 8}



Louise Pleated Dress

Style # SS10-206

Ship: Feb 2010

Bodice is navy blue knit, skirt is navy blue cotton, hot pink buttons & tie around belt.

{12-18m, 18-24m, 2T, 3T, 4, 5, 6, 7, 8}



Clara shorts jumper

Style # SS10-204

Ship: Feb 2010

Woven cotton fabric, off white w/ navy blue polka dots. Hot pink buttons and navy tie around belt.

{12-18m, 18-24m, 2T, 3T, 4, 5, 6, 7, 8}





Mae Ruffled hoodie

Style # SS10-106

Ship: Feb 2010

White cotton knit hoodie, with ruffles and puckered pockets.
{12-18m, 18-24m, 2T, 3T, 4, 5, 6, 7, 8}



Gretta Ruffled Skirt

Style # SS10-107

Ship: Feb 2010

Soft cotton knit fabric, in yellow & white stripes. Elastic band around waist.
{12-18m, 18-24m, 2T, 3T, 4, 5, 6, 7, 8}



Natalie Denim Dress

Style # SS10-108

Ship: Feb 2010

Pre-washed denim dress, elastic around sides to back. Very comfortable to wear.
{12-18m, 18-24m, 2T, 3T, 4, 5, 6, 7, 8}

Alice Ruffled Top

Style # SS10-105

Ship: Feb 2010

Colors: White or Navy
Cotton knit tee with ruffles down the front, gathered cap sleeves.
{12-18m, 18-24m, 2T, 3T, 4, 5, 6, 7, 8}



Greta headband

Style # SS10-101

Ship: Feb 2010

Reversible knit headband, one side is navy polka dots, other side is yellow stripes.
One size



Gretta Leggings

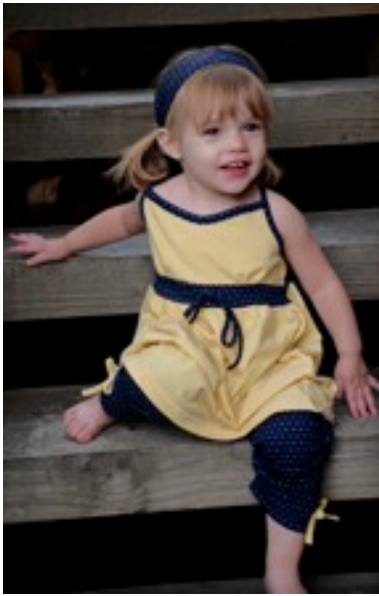
Style # SS10-103

Ship: Feb 2010

Colors: yellow stripes or Navy polka dots

Soft cotton knit leggings, gathered sides with bow detail.

{12-18m, 18-24m, 2T, 3T, 4, 5, 6, 7, 8}



Gretta Tunic Dress

Style # SS10-102

Ship: Feb 2010

Cotton knit fabric in yellow and white stripes with navy polka dot trim

{12-18m, 18-24m, 2T, 3T, 4, 5, 6, 7, 8}



Gretta Twirl Dress

Style # SS10-104

Ship: Feb 2010

Cotton knit fabric in yellow and white stripes with navy and polka dots tie around waist.

{12-18m, 18-24m, 2T, 3T, 4, 5, 6, 7, 8}



Gretta leggings

Style # SS10-103

Ship: Feb 2010

Colors: yellow stripes or Navy polka dots

Soft cotton knit leggings, gathered sides with bow detail.

{12-18m, 18-24m, 2T, 3T, 4, 5, 6, 7, 8}

Gretta headband

Style # SS10-101

Ship: Feb 2010



Reversible knit headband, one side is navy polka dots, other side is yellow stripes.

Gretta infant Romper

Style# SS10-1010

Ship: Feb 2010

Colors: Yellow stripes, white w/navy
Soft cotton knit rompers, ruffles around neck & bow closure.

White romper has navy satin trim

Pre-pack 1 {0-3, 3-6, 6-9, 9-12m}

Pre-pack 2 {12m, 18m, 24m}





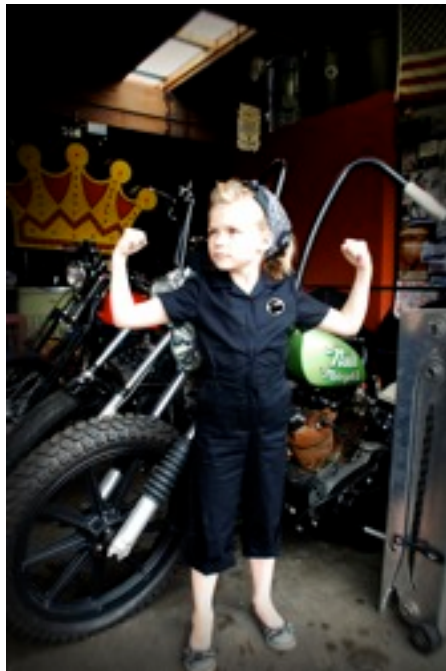
Rosie Girlie Coveralls

Style # SS10-306

Ship: April 2010

Black cotton twill coveralls for the girls, fitted with elastic around waist, and cropped short. Cherry patch on front.

{ 12-18m, 18-24m, 2T, 3T, 4, 5, 6, 7, 8 }





Mae Shorts halter

Style # SS10-300

Ship: April 2010

Black cotton knit body w/polka dot fabric around neck. Elastic in back

{12-18m, 18-24m, 2T, 3T, 4, 5, 6, 7, 8)



Mae Cherries Tank

Style # SS10-303

Ship: April 2010

White cotton knit tank with b&w polka dot applique.

{12-18m, 18-24m, 2T, 3T, 4, 5, 6, 7, 8)

Mae Shorts

Style # SS10-304

Ship: April 2010

Cotton black & white polka dot shorts, cuffed hems. Adjustable waist band.

{12-18m, 18-24m, 2T, 3T, 4, 5, 6, 7, 8)

Gene Headband

Style # SS10-010

Ship: Feb 2010

Basic black satin headband w/ bow on side. one size



Lauren Basic Tank Dress

Style # SS10-305

Ship: April 2010

White cotton knit fabric on bodice of dress, black velvet belt and black cotton on gathered skirt. Zipper on side.

{12-18m, 18-24m, 2T, 3T, 4, 5, 6, 7, 8)

Lauren Striped Leggings

Style # SS10-302

Ship: April 2010

Cotton knit stretch leggings in b&w stripes.

{12-18m, 18-24m, 2T, 3T, 4, 5, 6, 7, 8)



Mae Twirl Dress

Style # SS10-301

Ship: April 2010

B&W polka dot dress in a heavy knit fabric. Lots of ruffles and layers.

{12-18m, 18-24m, 2T, 3T, 4, 5, 6, 7, 8}

Lauren Striped Leggings

Style # SS10-302

Ship: April 2010

Cotton knit stretch leggings in b&w stripes.

{12-18m, 18-24m, 2T, 3T, 4, 5, 6, 7, 8}

Linen headband



Style # SS10-208

Ship: Feb 2010

Colors: hot pink, black, white

Linen flower attached to stretch headband.
one size

Terms & Conditions

CANCELATIONS

All orders are CUT TO ORDER. Hula Mula™ reserves the right to charge fees for early cancellations, any cancellation must be submitted in writing to KH 1 month prior to ship date.

PAYMENTS

Payment can be made by Credit card or Check. NO COD. Late payments will be processed a 6% fee every 30 days payment is not received.

SHIPPING

Delivery charges, estimated timescales and exceptions are set by UPS, we charge for shipping and packaging supplies. Hula Mula™ has an open shipping window of 60 days to complete the order and any back-ordered items must be accepted with in this window for US stores.

EXCLUSIVITY

Knuckleheads™ exclusivity is only valid within zip code only, and orders must exceed specified amounts each season, unless other arrangements have been made.

RETURN POLICY

Merchandise may only be returned if we have made a mistake and sent you the wrong order/item or if you received a damaged item. All returns must be within 10 DAYS of original purchase. All orders must be authorized for return before they are sent. Please do not send your order for return without authorization. Hula Mula™ also reserves the right to charge a re-stock fee of 20%.

On returns, original shipping cost will not be reimbursed. Clearance and sale merchandise are FINAL sales. No returns. Returns take approximately 2-4 weeks for processing.

We also make every effort to ensure that sizes and measurements are as accurate as possible. **Sizing is based on** Hula Mula™ specs and we will not accept returns based on sizing issues.

RESTRICTIONS ON USE OF MATERIALS

No material from Hula Mula™ may be copied, reproduced, republished, uploaded, posted, transmitted, or distributed in any way without permission. Modification of the materials or use of the materials for any other purpose is a violation of Hula Mula™ copyright and other proprietary rights. For purposes of these terms, the use of any such material on any other Web site or networked computer environment is prohibited. All trademarks, service marks and trade names are proprietary



Hula Mula Spring/Summer 2010

Photography Credits:

Shannon Sewell Photography
Jatawny Vision
Melissa Nash

Shoe credits:

See Kai Run
Vincent Shoes
Chooka Boots

Questions?

360-696-9744

sales@knuckleheadsclothing.com

www.HulaMula.com



The End