

Hula Mula

SPRING 08



HULA MULA

Inspired by vintage patterns and the nostalgia of rockabilly, swing and glamorous hollywood. Hula Mula is fashionably here, catering to little girls ages newborn to 6yrs.

Hula Mula's edgy but girly line of clothing shows a fun modern twist on the vintage sailor era of the swinging 40s, the theme "Anchors Away" with its bright whites and true reds, mixed with fabulous plaids, show off the vintage styles with ease. Add a few ruffles here and there, and the look is perfectly girly!

In the more modern B&W collection you will find a throw back to the 60s, where baby doll styles and big bows were the worn by the fashion forward. Inspired by icons, Audrey Hepburn, and the unique london style of the era, this look is modern, fun and comfortable.

Hula Mula is the sister company to the all boys line, "Knuckleheads", both lines show off its vintage flavor with style and modern appeal.





DOTTED SWISS

FRILLS & DOTS

Flirty, girly.....and modern too! Vintage dotted swiss made popular in the 50s just got more comfy and modern, we mixed this classic fabric with chic black and the look is perfectly stunning!



BOW TANK

Black knit tank w/ b&w polka-dot bow

Sizes; 6m-6yrs



TWIRL SKIRT-DOTTED SWISS

Layers of unique raised dotted fabric make this skirt a favorite for summer. Elastic band waist.

Sizes; 6m-6yrs



TUXEDO BLOUSE-DOTTED SWISS

Fitted, cap sleeve blouse with pearl buttons and tuxedo ruffles on front.

Sizes; One size

POLKA DOT PLAYTIME



POLKA-DOT PUFF SLEEVE JACKET

Cute fitted jacket in polkadot knit.

Sizes; 6m-6yrs



POLKA-DOT BLOOMERS

Gathered bloomers with elastic leg openings, and button front in knit polka-dot fabric.

Sizes; 6m-6yrs



WHITE TIE TOP

Knit top w/ peter-pan collar, buttons down front with tie around waist and puff sleeves.

Sizes; 6m-6yrs



POLKA-DOT HOODIE

B&W polka dot print on knit fabric,



POLKA-DOT WALKING SHORTS

Knee length walking shorts in knit, elastic waist band.

Sizes; 6m-6yrs



POLKA-DOT ALINE DRESS

Low hip dress in knit polka-dot fabric, pair it up with the knit walking shorts.

Sizes; 6m-6yrs



ANCHORS AWAY HOLLYWOOD

Just watch a few old classic movies and it is easy to see our inspiration for this darling collection. An era when the cities were full of sailors and fresh fashions were worn by the girls at home.



HALTER TOP-ANCHOR

Cute, basic cotton top w/ ties in the back.
SIZES; 6M-6YRS



PENCIL SKIRT

Lined straight skirt w/ navy waist band.
SIZES; 6M-6YRS



HEADBAND-ANCHOR

Sizes; one size



JUMPER-ANCHORS

Shirred front one-piece jumper w/navy straps, and pockets.

Sizes; 6m-6yrs



SUSPENDER DRESS-ANCHORS

Lined, full skirt w/navy accents

Sizes; 6m-6yrs

ANCHORS AWAY



RED SAILOR SHORTS

Twill shorts, knee length with piping down sides, and white anchor buttons.

Sizes; 6m-6yrs



PUFF SLEEVE TEE

Hula Mula logo with darling puff sleeves in anchor fabric.

Sizes; 6m-6yrs



RUFFLE PANTS- ANCHOR

Capri length cotton pants w/ elastic waist.

Sizes; 6m-6yrs



TEA SHIRT-ANCHOR

Shirred top with cute anchor buttons & cap sleeves.

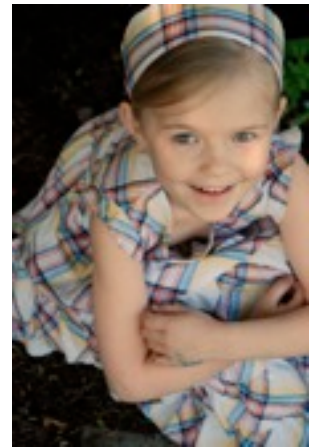
Sizes; 6m-6yrs





VINTAGE PLAID

Plaid - this timeless classic is new again, it is a perennial favorite that looks better than ever. From pleated skirts to ruffles, this subtle plaid is a favorite for spring.



RUFFLE DRESS-WHITE
Cotton dress w/ front tie & ruffles
raised dotted swiss fabric
Size; 6m-6yrs



RUFFLE DRESS- PLAID
Cotton plaid fabric
Sizes; 6m-6yrs



HEADBAND-PLAID OR WHITE
Adjustable tie headband
Sizes; one size

VINTAGE PLAIDS



TEA SHIRT-PLAID

Cotton shirt with shirring in front & anchor buttons in navy.

Sizes; 6m-6yrs



JUMPER-PLAID

One piece short-all with shirring in front and adjustable straps. sizes 6m-18 have snaps for diaper changes.

Sizes; 6m-6yrs



JUMPER DRESS-PLAID

Darling flared skirt w/removable suspenders, underskirt is lined in cotton.

Sizes; 6m-6yrs



NAVY ANCHOR SHORTS

Long knee shorts in classic navy twill, with front tie, and cool metal buttons.

Sizes; 6m-6yrs



HALTER TOP-PLAID

Cute basic cotton top w/ ties in the back.

Sizes; 6m-6yrs



ANCHOR TANK

Rib knit tee in navy, w/plaid anchor fabric.

Sizes; 6m-6yrs





Lil Mula

We couldn't resist adding a few pieces just for the lil ones. This collection is for babies newborn to 18 months.



SUN SUIT INFANT-ANCHORS OR PLAID

White cotton romper w/ruffles and adjustable shoulder straps.

Sizes; 0-3m to 18-24m



KNIT HEADBANDS-WHITE, NAVY, RED

Knit fabric w/knot tie on top

Sizes, One size- 3m-18m



ANCHOR ROMPER-NAVY, WHITE OR RED

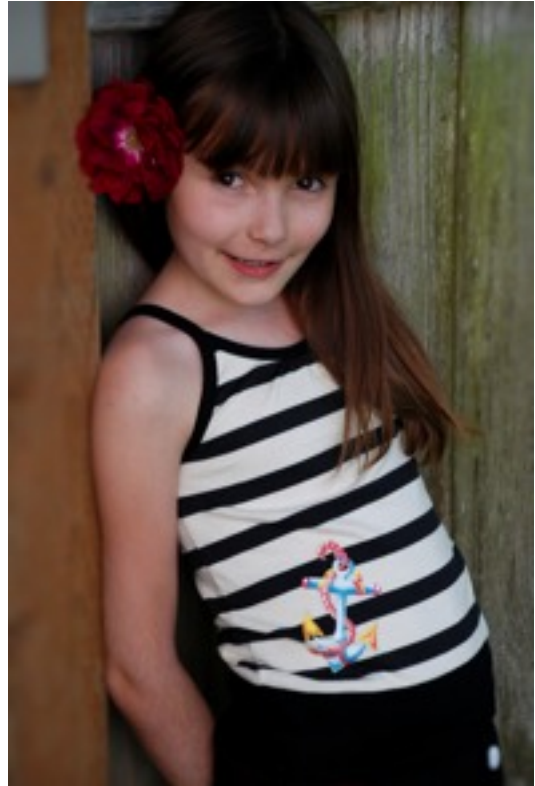
Knit fabric with contrasting stitching and anchor on front.

Sizes; 0-3M-18M

ROCKABILLY STRIPES

B&W STYLE

Old meets new with a modern take on petal pushers and classic B&W stripes. This classic look is hot again with extra details and comfy knits.



JAIL TANK

Comfy cotton stripes w/ colorful tattoo anchor artwork.

Sizes; 6m-6yrs



SAILOR CAPRIS

Super comfy knit capris w/anchor button details.

Sizes; 6m-6yrs



ANCHOR TANK-JAIL

Cute and comfy, this tee is cream, with anchor on front in jail stripes and cute shoulder flaps w/red anchor buttons.

Sizes; 6m-6yrs



Hula Mula™ Terms & Agreements

ORDERING

Minimum order is \$350, 4pc min per style. *Credit card must be on file for order to be accepted. We must receive full payment for the goods that you order before your order can be processed, unless other arrangements are agreed.

CANCELATIONS

All orders are cut to order, and buyer has only 7 days to cancel in writing.

PAYMENTS

Payment can be made by Credit card or COD. Net 30 customers must provide the proper documentation at the time the order is placed. Late payments will be processed a 6% fee every 30 days.

SHIPPING

Delivery charges, are estimated by UPS, we charge for shipping and packaging supplies. Any dates we specify for the delivery of the goods are approximate only. Hula mula™ has an open shipping window of 60 days to complete the order and any back-ordered items must be accepted with in this window for US stores.

RETURN POLICY

Merchandise may only be returned if we have made a mistake and sent you the wrong order/item or if you received a damaged item. All returns must be within 10 DAYS of original purchase. All orders must be authorized for return before they are sent.

Hula mula™ also reserves the right to charge a re-stock fee of 20%.

On returns, original shipping cost will not be reimbursed. Clearance and sale merchandise are FINAL sales. No returns. Returns take approximately 2-4 weeks for processing. We make every effort to ensure that sizes and measurements are as accurate as possible. ***Sizing is based on Hula mula™ specs and we will not accept returns based on sizing issues.***

QUESTIONS? CONTACT US

PH. (360) 696-9744 FAX: (360) 397-3073

EMAIL: SALES@HULAMULA.COM

WWW.KNUCKLEHEADSCLOTHING.COM

WWW.HULAMULA.COM

hula  mula